

General Surgery

RESIDENCY PROGRAM AT
**Riverside Community
Hospital**

Welcome to the General Surgery Residency Program at Riverside Community Hospital

The General Surgery Residency Program at Riverside Community Hospital is part of the HCA Healthcare Graduate Medical Education network. HCA Healthcare is the nation's leading provider of quality, patient-centered care. We are also the leader in graduate medical education, all brought together by a single mission:

Above all else, we are committed to the care and improvement of human life.

ACGME ID: 4400500430

Tracks & Positions

| Tracks | NRMP # | Available Positions |
|-------------|-----------|---------------------|
| Categorical | 1877440C0 | 3 |
| Preliminary | 1877440P0 | 3 |

Salary

| PGY1 | PGY2 | PGY3 | PGY4 | PGY5 |
|----------|----------|----------|----------|----------|
| \$55,543 | \$57,251 | \$59,686 | \$61,930 | \$64,921 |

Welcome to Riverside!

Residency training is an exciting step in your medical career, and we are delighted that you are interested in General Surgery!

Our organization is dedicated to educating future physicians who are exceptionally well prepared in the basic science, clinical knowledge, cognitive and technical skills, and judgment required of surgeons and surgical leaders. In this five-year program, you will have every opportunity to grow and develop in an environment rich in patient care, educational experiences, and research opportunities. It will integrate a balance of university academics and community clinical experience. We strive to actively develop young surgeons by cultivating our residents' interests and mentoring them in pursuit of their passion.

An active outpatient clinic experience and regular teaching conferences round out the educational program. Our program provides a rich substrate for the growth and development of our residents' surgical careers. Our goal is to train highly motivated individuals in the art and science of surgery who are capable immediately upon completion of the residency program of either entering practice or obtaining the most competitive subspecialty fellowships.

Riverside Community Hospital has a highly collegial environment with an emphasis on resident wellness. We are committed to building pipelines of vastly trained, patient-centered physicians. All residents who walk our hallways will receive superior, patient-centered training that will enable them to become leaders in their post-residency careers.

Please take a few moments to explore these web pages, where you will learn more about our program. If you have questions, please do not hesitate to contact us. We thank you for visiting our program's website, and we welcome any questions you might have about surgical training at Riverside Community Hospital.

Best wishes,

Ahmed Mahmoud, M.D., FACS

Program Director, RCH/UCR

General Surgery Residency

Associate Professor of Clinical Surgery



Our faculty



Ahmed Mahmoud
M.D., F.R.C.S., F.A.C.S.

Program Director
General Surgery Residency Program



Harvey Nurick, MD
General Surgery, Head and Neck Surgery,
Vascular Surgery

Riverside Community Hospital / UCR SOM
Associate Professor of Clinical Surgery
University of California Riverside



Michael Chin, MD
General Surgery and Vascular Surgery



Aaron Lee, DO
General Surgery, Bariatric and MIS



Gustavo Lara, MD
General Surgery and Vascular Surgery



Martin G. Perez, MD
General Surgery, Bariatric and MIS



David Plurad, MD, MBA, FACS
General Surgery and Vascular Surgery



John L. Coon, MD, FACS
General Surgery and Bariatric Surgery

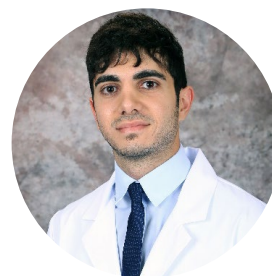
Current residents



Mohamed Elkahly, M.D.
Ain Shams University Faculty
of Medicine



Oluwatosin Fawibe, M.D.
Loma Linda University School
of Medicine



Amarseen Mikael, M.D.
St. George's University School
of Medicine



Teresa Huynh, M.D.
Chicago Medical School at
Rosalind Franklin University of
Medicine & Science



Glenn Geesman, M.D.
California Northstate University
College of Medicine



Brianna Williams, M.D.
University of California, Irvine
School of Medicine



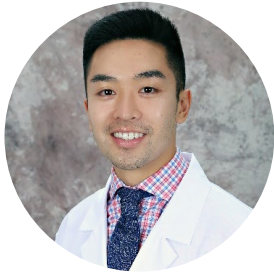
An Bui, M.D.
St. George's University School
of Medicine



Sara Hajizadeh, M.D.
California Northstate University
College of Medicine



Christopher Co, D.O.
Touro University College
of Osteopathic Medicine -
California



Ryan Cheung, M.D.
California Northstate University
College of Medicine



Manika Paul, M.D.
California Northstate
University College of Medicine



Elliott Smith, M.D.
American University of the
Caribbean School of Medicine



About the program

Excellence in Physician Training & Education in Southern California

Our **graduate medical education programs**, located in the heart of Southern California, hosts residents who are pursuing careers of excellence and professionalism in the field of healthcare. Our state-of-the-art facility provides a competitive advantage through our full range of service offerings, exposing our residents to a diverse range of patients and clinical challenges, preparing them for lifetimes of capability in their practices. Keep reading to learn more about what sets our residency program apart.

Residency at Riverside Community Hospital

Our goal is to assist our residents in developing the skills needed to start their careers well. By the end of training with our team at the Riverside Graduate Medical Education Program, we want our residents to be clinically astute, academically exceptional, altruistic, and committed to the highest standards of professionalism.

There are many benefits to choosing our program:

- **Experience** – We have an exceptional faculty committed to teaching while their practices offer a full range of clinical scenarios and patients. Learners can expect nothing less than a well-rounded educational experience working with a broad range of conditions and diseases, kick-starting their careers and giving them invaluable experience.

- **Facility** - Riverside Community Hospital invests in much of the latest technology available in order to improve and enhance the patient experience. This in turn benefits our students and residents as they receive hands on training and experience with this equipment.
- **Location** - We are located in Riverside in the heart of Southern California. Riverside is less than 60 miles from beautiful beaches, wineries, and mountains, and close to world famous tourist locations including San Diego, Los Angeles, and Las Vegas. Our residents enjoy a once in a lifetime experience in one of the most exciting and vibrant places on earth.

To learn more about our residency program and the application process, **contact Riverside Community Hospital** today.

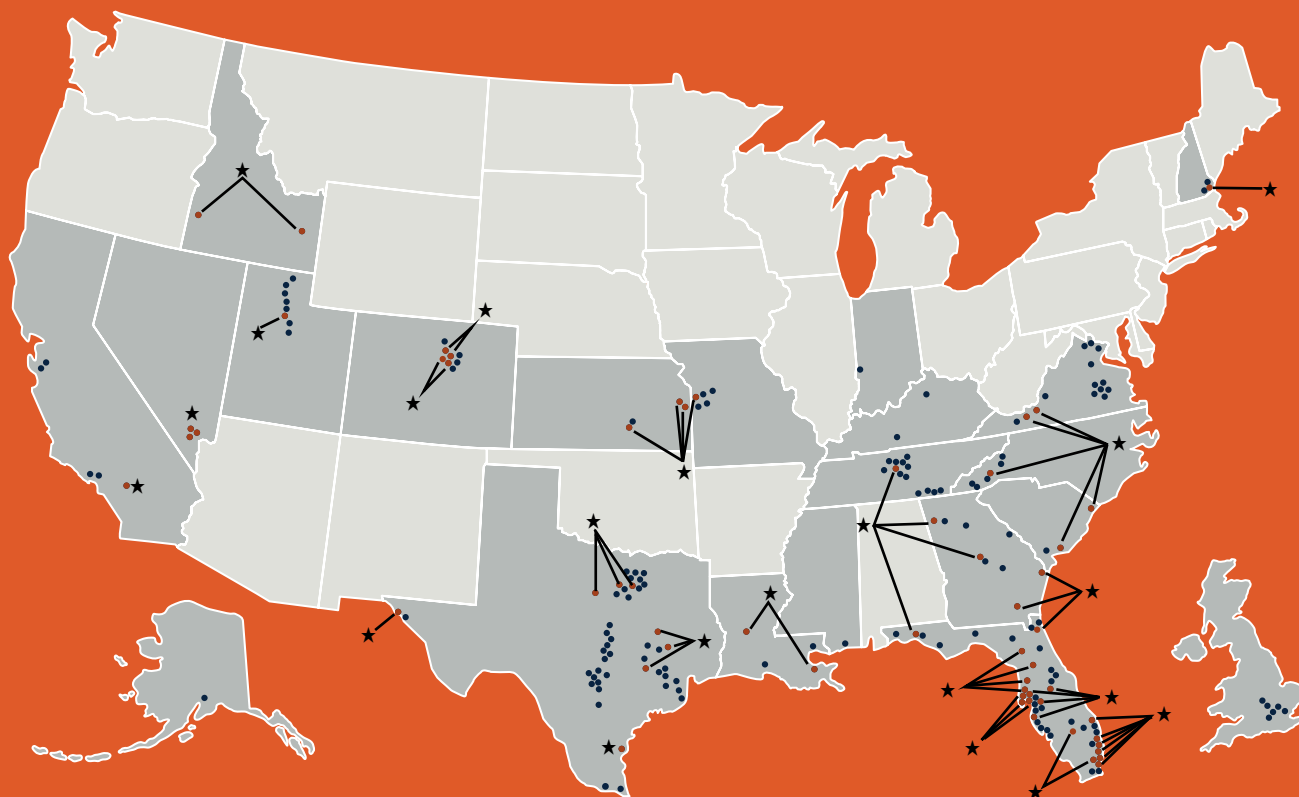
About HCA Healthcare GME

HCA Healthcare is a comprehensive healthcare network with 280,000[^] colleagues across 2,000 care facilities all committed to creating a positive impact every day. We continually invest in our colleagues and facilities to better serve our patients and local communities. The graduate medical education programs seek to inspire tomorrow's physicians to care for and improve human life by focusing on patient-centered approaches to practicing the latest evidence-based medicine.

To learn more about the benefits and expectations of training with an HCA Healthcare program, view our [Resident and Fellow Manual](#).



Our residency and fellowship programs are in **58**
hospitals located in **15** states



★ ○ Residency or Fellowship Program
● HCA Healthcare Hospital



Size

HCA Healthcare Graduate Medical Education is the largest sponsor of residency and fellowship programs across the nation.

4,202
residents

336
fellows

198
specialty programs (residencies)

74
sub-specialty programs
(fellowships)



Scholarly Activity

HCA Healthcare Graduate Medical Education provides a critical link between vigorous scholarly activity and real-world patient care from a sophisticated data repository of over 35 million^ patient encounters each year.

2,600+ HCA Healthcare GME
scholarly activities in 2019-20



Clinical Training

Each year approximately five percent of all U.S. hospital services happen at an HCA Healthcare facility, including:

35 million^ patient encounters
9.2 million emergency room visits
220,000^ babies delivered

HCA Healthcare Graduate Medical Education is a leader in clinical experience:

- Nationally known physician expertise across the country
- Investments in facilities allowing the advancement of patient care
- High emphasis on simulation results and low patient incidents
- Higher patient touch than academic facilities
- Annual collaborative mass casualty event team training

Residencies

Facility Name, City

ACGME Program Number

ANESTHESIOLOGY

California

Riverside Community Hospital, Riverside..... 0400500031

Florida

Kendall Regional Medical Center, Miami..... 0401100206

Oak Hill Hospital, Spring Hill 0401100211

Ocala Regional Medical Center, Ocala.....0401100212

Kansas

Wesley Medical Center, Wichita 0401922051

Louisiana

Tulane Medical Center, New Orleans..... 0402131168

Nevada

MountainView Hospital- Nevada, Las Vegas.....0403100001

South Carolina

Grand Strand Medical Center, Myrtle Beach 0404500144

DERMATOLOGY

Florida

Largo Medical Center, Largo 0801100139

Orange Park Medical Center, Orange Park.....0801100140

Louisiana

Tulane Medical Center, New Orleans.....0802121108

Texas

Corpus Christi Medical Center, Corpus Christi 0804800145

Medical City Weatherford, Weatherford..... 0804800144

Virginia

Lewisgale Hospital- Montgomery, Blacksburg.....0805100132

EMERGENCY MEDICINE

California

Riverside Community Hospital, Riverside.....1100500218

Florida

Aventura Hospital & Medical Center, Aventura 1101100196

Brandon Regional Hospital, Brandon 1101100204

Kendall Regional Medical Center, Miami..... 1101100195

Facility Name, City

ACGME Program Number

North Florida Regional Medical Center, Gainesville 1101100201

Oak Hill Hospital, Spring Hill1101100205

Ocala Regional Medical Center, Ocala..... 1101100200

Orange Park Medical Center, Orange Park.....1101100202

Osceola Regional Medical Center, Kissimmee 1101100194

St. Lucie Medical Center, Port St. Lucie..... 1101100199

Georgia

Coliseum Medical Centers, Macon.....1101200092

Nevada

MountainView Hospital- Nevada, Las Vegas..... 1103100190

South Carolina

Grand Strand Medical Center, Myrtle Beach1104500185

Trident Medical Center, Charleston..... 1104500186

Texas

Kingwood Medical Center, Kingwood1104800220

Virginia

Lewisgale Medical Center, Salem.....1105100210

FAMILY MEDICINE

California

Riverside Community Hospital, Riverside.....1200500747

Colorado

Sky Ridge Medical Center, Lone Tree 1200700625

Swedish Medical Center, Englewood 1200721544

Florida

North Florida Regional Medical Center, Gainesville1201100730

Oak Hill Hospital, Spring Hill1201100737

Ocala Regional Medical Center, Ocala.....1201100740

Orange Park Medical Center, Orange Park..... 1201100729

St. Lucie Medical Center, Port St. Lucie 1201100746

St. Petersburg General Hospital, St. Petersburg..... 1201100736

Georgia

Memorial Health University Medical Center, Savannah 1201211095

Memorial Satilla Health, Waycross..... 1201221637

| Facility Name, City | ACGME Program Number |
|---------------------|----------------------|
|---------------------|----------------------|

FAMILY MEDICINE cont.

Idaho

| | |
|---|------------|
| Eastern Idaho Regional Medical Center, Idaho Falls..... | 1201500737 |
| West Valley Medical Center, Caldwell..... | 1201521588 |

Kansas

| | |
|-------------------------------------|------------|
| Wesley Medical Center, Wichita..... | 1201911142 |
|-------------------------------------|------------|

Louisiana

| | |
|---|------------|
| Rapides Regiongal Medical Center, Alexandria..... | 1202131566 |
|---|------------|

Missouri

| | |
|---|------------|
| Research Medical Center, Kansas City..... | 1202821183 |
|---|------------|

Nevada

| | |
|--|------------|
| Southern Hills Hospital & Medical Center, Las Vegas..... | 1203100703 |
|--|------------|

New Hampshire

| | |
|--|------------|
| Portsmouth Regional Hospital, Portsmouth | 1203200558 |
|--|------------|

North Carolina

| | |
|----------------------------------|------------|
| Mission Hospital, Asheville..... | 1203611219 |
|----------------------------------|------------|

Tennessee

| | |
|--|------------|
| TriStar Southern Hills Medical Center, Nashville | 1204700729 |
|--|------------|

South Carolina

| | |
|---|------------|
| Grand Strand Medical Center, Myrtle Beach | 1204500669 |
|---|------------|

Texas

| | |
|--|------------|
| Conroe Regional Medical Center, Conroe | 1204821454 |
| HCA Houston Healthcare West, Houston | 1204800724 |
| Medical City Arlington, Arlington..... | 1204800726 |
| Medical City Fort Worth, Fort Worth | 1204800712 |

Utah

| | |
|-------------------------------------|------------|
| St. Mark's Hospital, Millcreek..... | 1204921529 |
|-------------------------------------|------------|

Virginia

| | |
|---|------------|
| Lewisgale Hospital- Montgomery, Blacksburg..... | 1205100720 |
| Lewisgale Medical Center, Salem..... | 1205100721 |

INTERNAL MEDICINE

California

| | |
|--|------------|
| Los Robles Regional Medical Center, Thousand Oaks..... | 1400500931 |
| Riverside Community Hospital, Riverside..... | 1400500917 |

Colorado

| | |
|--|------------|
| Sky Ridge Medical Center, Lone Tree..... | 1400700075 |
|--|------------|

Florida

| | |
|--|------------|
| Aventura Hospital & Medical Center, Aventura | 1401100924 |
| Blake Medical Center, Bradenton..... | 1401100944 |
| Brandon Regional Hospital, Brandon | 1401100940 |
| Citrus Memorial Hospital, Inverness | 1401100956 |
| JFK Medical Center, Lake Worth | 1401131535 |
| Kendall Regional Medical Center, Miami..... | 1401100926 |
| Largo Medical Center, Largo | 1401100946 |
| Medical Center of Trinity, Trinity..... | 1401100959 |
| North Florida Regional Medical Center, Gainesville | 1401100938 |
| Northside Hospital, St. Petersburg..... | 1401100943 |
| Oak Hill Hospital, Spring Hill | 1401100928 |
| Ocala Regional Medical Center, Ocala..... | 1401100939 |
| Orange Park Medical Center, Orange Park..... | 1401100937 |
| Osceola Regional Medical Center, Kissimmee | 1401100909 |
| Regional Medical Center Bayonet Point, Hudson..... | 1401100951 |
| Westside Regional Medical Center & Northwest Medical Center, Margate..... | 1401100955 |

| Facility Name, City | ACGME Program Number |
|---------------------|----------------------|
|---------------------|----------------------|

Georgia

| | |
|--|------------|
| Coliseum Medical Centers, Macon..... | 1401200931 |
| Memorial Health University Medical Center, Savannah | 1401212108 |
| Redmond Regional Medical Center, Rome | 1401200930 |

Idaho

| | |
|---|------------|
| Eastern Idaho Regional Medical Center, Idaho Falls..... | 1401500546 |
|---|------------|

Kansas

| | |
|--|------------|
| Overland Park Regional Medical, Overland Park..... | 1402800917 |
| Wesley Medical Center, Wichita..... | 1401921140 |

Louisiana

| | |
|---|------------|
| Tulane Medical Center, New Orleans..... | 1402121147 |
|---|------------|

Nevada

| | |
|---|------------|
| MountainView Hospital- Nevada, Las Vegas..... | 1403100498 |
|---|------------|

New Hampshire

| | |
|--|------------|
| Portsmouth Regional Hospital, Portsmouth | 1403200226 |
|--|------------|

North Carolina

| | |
|----------------------------------|------------|
| Mission Hospital, Asheville..... | 1403600333 |
|----------------------------------|------------|

South Carolina

| | |
|---|------------|
| Grand Strand Medical Center, Myrtle Beach | 1404500406 |
| Trident Medical Center, Charleston..... | 1404500407 |

Tennessee

| | |
|--|------------|
| TriStar Centennial Medical Center, Nashville | 1404700479 |
|--|------------|

Texas

| | |
|---|------------|
| Corpus Christi Medical Center, Corpus Christi | 1404800892 |
| Kingwood Medical Center, Kingwood | 1404800902 |
| Las Palmas Del Sol Healthcare, El Paso..... | 1404800900 |
| Medical City Arlington, Arlington..... | 1404800907 |
| Medical City Fort Worth, Fort Worth | 1404800894 |
| Medical City Weatherford, Weatherford..... | 1404800896 |

Virginia

| | |
|---|------------|
| Lewisgale Medical Center, Salem..... | 1405100436 |
| Lewisgale Hospital- Montgomery, Blacksburg..... | 1405100900 |

INTERNAL MEDICINE - PEDIATRICS

Kansas

| | |
|-------------------------------------|------------|
| Wesley Medical Center, Wichita..... | 7001932124 |
|-------------------------------------|------------|

Louisiana

| | |
|---|------------|
| Tulane Medical Center, New Orleans..... | 7002132023 |
|---|------------|

NEUROLOGICAL SURGERY

Louisiana

| | |
|---|------------|
| Tulane Medical Center, New Orleans..... | 1602121033 |
|---|------------|

NEUROLOGY

California

| | |
|--|------------|
| Riverside Community Hospital, Riverside..... | 1800500167 |
|--|------------|

Colorado

| | |
|--|------------|
| Sky Ridge Medical Center, Lone Tree..... | 1800700020 |
|--|------------|

Florida

| | |
|--|------------|
| Osceola Regional Medical Center, Kissimmee | 1801100155 |
|--|------------|

Louisiana

| | |
|---|------------|
| Tulane Medical Center, New Orleans..... | 1802121044 |
|---|------------|

Nevada

| | |
|--|------------|
| Southern Hills Hospital & Medical Center, Las Vegas..... | 1803100154 |
|--|------------|

| Facility Name, City | ACGME Program Number |
|--|----------------------|
| NEUROMUSCULOSKELETAL MEDICINE | |
| Colorado | |
| Sky Ridge Medical Center, Lone Tree | 2750700001 |
| Virginia | |
| Lewisgale Hospital Montgomery, Blacksburg..... | 2755100002 |
| OBSTETRICS AND GYNECOLOGY | |
| Florida | |
| Brandon Regional Hospital, Brandon | 2201100080 |
| North Florida Regional Medical Center, Gainesville | 2201100078 |
| Osceola Regional Medical Center, Kissimmee | 2201100077 |
| West Florida Hospital, Pensacola..... | 2201100082 |
| Georgia | |
| Memorial Health University Medical Center, Savannah ... | 2201211080 |
| Kansas | |
| Overland Park Regional Medical, Overland Park..... | 2201900105 |
| Wesley Medical Center, Wichita | 2201911104 |
| Louisiana | |
| Tulane Medical Center, New Orleans..... | 2202121108 |
| Nevada | |
| MountainView Hospital- Nevada, Las Vegas..... | 2203100319 |
| North Carolina | |
| Mission Hospital, Asheville..... | 2203621340 |
| Texas | |
| HCA Houston Healthcare West, Houston | 2204800363 |
| Las Palmas Del Sol Healthcare, El Paso..... | 2204800362 |
| OPHTHALMOLOGY | |
| Florida | |
| Regional Medical Center Bayonet Point, Hudson..... | 2401100184 |
| Louisiana | |
| Tulane Medical Center, New Orleans..... | 2402121062 |
| ORTHOPAEDIC SURGERY | |
| Florida | |
| Largo Medical Center, Largo | 2601100221 |
| Ocala Regional Medical Center, Ocala..... | 2601100222 |
| Kansas | |
| Wesley Medical Center, Wichita | 2601931106 |
| ORTHOPAEDIC SURGERY cont. | |
| Louisiana | |
| Tulane Medical Center, New Orleans..... | 2602131010 |
| OTOLARYNGOLOGY | |
| Louisiana | |
| Tulane Medical Center, New Orleans..... | 2802121043 |
| PATHOLOGY | |
| Florida | |
| Brandon Regional Hospital, Brandon | 3001100080 |
| Louisiana | |
| Tulane Medical Center, New Orleans..... | 3002121122 |
| PEDIATRICS | |
| Florida | |
| Palms West Hospital, Loxahatchee | 3201100434 |
| Georgia | |
| Memorial Health University Medical Center, Savannah .. | 3201221400 |

| Facility Name, City | ACGME Program Number |
|--|----------------------|
| Kansas | |
| Wesley Medical Center, Wichita | 3201921086 |
| Louisiana | |
| Tulane Medical Center, New Orleans..... | 3202121092 |
| Nevada | |
| Sunrise Hospital & Medical Center, Las Vegas..... | 3203121407 |
| PHYSICAL MEDICINE AND REHABILITATION | |
| Florida | |
| West Florida Hospital, Pensacola..... | 3401100110 |
| Nevada | |
| MountainView Hospital- Nevada, Las Vegas..... | 3403100001 |
| PLASTIC SURGERY | |
| Louisiana | |
| Tulane Medical Center, New Orleans..... | 3602131137 |
| PREVENTIVE MEDICINE | |
| Louisiana | |
| Tulane Medical Center, New Orleans..... | 3802121014 |
| PSYCHIATRY | |
| Colorado | |
| The Medical Center of Aurora, Aurora | 4000700040 |
| Florida | |
| Aventura Hospital & Medical Center, Aventura | 4001100322 |
| Largo Medical Center, Largo | 4001100315 |
| North Florida Regional Medical Center, Gainesville | 4001100314 |
| Orange Park Medical Center, Orange Park..... | 4001100320 |
| Osceola Regional Medical Center, Kissimmee | 4001100319 |
| University Hospital & Medical Center, Tamarac | 4001100316 |
| Georgia | |
| Coliseum Medical Centers, Macon..... | 4001200263 |
| Louisiana | |
| Tulane Medical Center, New Orleans..... | 4002121078 |
| Nevada | |
| Southern Hills Hospital & Medical Center, Las Vegas..... | 4003100298 |
| North Carolina | |
| Mission Hospital, Asheville..... | 4003600173 |
| Tennessee | |
| TriStar Centennial Medical Center, Nashville | 4004700259 |
| Virginia | |
| Lewisgale Medical Center, Salem..... | 4005100268 |
| RADIOLOGY | |
| California | |
| Riverside Community Hospital, Riverside..... | 4200500916 |
| Florida | |
| Aventura Hospital & Medical Center, Aventura | 4201100262 |
| Medical Center of Trinity, Trinity | 4201100263 |
| Georgia | |
| Memorial Health University Medical Center, Savannah .. | 4201212054 |
| Kansas | |
| Wesley Medical Center, Wichita | 4201912070 |
| Louisiana | |
| Tulane Medical Center, New Orleans..... | 4202121235 |
| Nevada | |
| MountainView Hospital- Nevada, Las Vegas..... | 4203100001 |

| Facility Name, City | ACGME Program Number | Facility Name, City | ACGME Program Number |
|--|----------------------|--|----------------------|
| SURGERY | | Nevada | |
| California | | MountainView Hospital- Nevada, Las Vegas..... | 9993100001 |
| Riverside Community Hospital, Riverside..... | 4400500430 | Southern Hills Hospital & Medical Center, Las Vegas..... | 9993100002 |
| Colorado | | North Carolina | |
| Sky Ridge Medical Center, Lone Tree..... | 4400700061 | Mission Hospital, Asheville..... | 9993600006 |
| Swedish Medical Center, Englewood..... | 4400700060 | South Carolina | |
| Florida | | Grand Strand Medical Center, Myrtle Beach | 9994500253 |
| Brandon Regional Hospital, Brandon | 4401100445 | Texas | |
| JFK Medical Center, Lake Worth | 4401121431 | HCA Houston Healthcare West, Houston | 9994800259 |
| Kendall Regional Medical Center, Miami..... | 4401100435 | Kingwood Medical Center, Kingwood | 9994800258 |
| Ocala Regional Medical Center, Ocala..... | 4401100442 | Las Palmas Del Sol Healthcare, El Paso..... | 9994800257 |
| Orange Park Medical Center, Orange Park..... | 4401100448 | Virginia | |
| Osceola Regional Medical Center, Kissimmee | 4401100443 | Lewisgale Hospital- Montgomery, Blacksburg..... | 9995100206 |
| Regional Medical Center Bayonet Point, Hudson..... | 4401100446 | UROLOGY | |
| Westside Regional Medical Center | | Louisiana | |
| & Northwest Medical Center, Margate..... | 4401100449 | Tulane Medical Center, New Orleans..... | 4802121058 |
| Georgia | | | |
| Memorial Health University Medical Center, Savannah .. | 4401231084 | | |
| Kansas | | | |
| Menorah Medical Center, Overland Park..... | 4401900388 | | |
| Wesley Medical Center, Wichita..... | 4401921387 | | |
| Louisiana | | | |
| Tulane Medical Center, New Orleans..... | 4402121423 | | |
| Nevada | | | |
| MountainView Hospital- Nevada, Las Vegas..... | 4403100379 | | |
| North Carolina | | | |
| Mission Hospital, Asheville..... | 4403600420 | | |
| South Carolina | | | |
| Grand Strand Medical Center, Myrtle Beach | 4404500319 | | |
| Texas | | | |
| Kingwood Medical Center, Kingwood | 4404800439 | | |
| Medical City Arlington, Arlington..... | 4404800440 | | |
| TRANSITIONAL YEAR | | | |
| California | | | |
| Riverside Community Hospital, Riverside..... | 9990500248 | | |
| Colorado | | | |
| Sky Ridge Medical Center, Lone Tree..... | 9990700018 | | |
| Florida | | | |
| Aventura Hospital & Medical Center, Aventura | 9991100229 | | |
| Blake Medical Center, Bradenton..... | 9991100234 | | |
| Brandon Regional Hospital, Brandon | 9991100237 | | |
| Kendall Regional Medical Center, Miami..... | 9991100235 | | |
| Largo Medical Center, Largo | 9991100245 | | |
| North Florida Regional Medical Center, Gainesville | 9991100242 | | |
| Oak Hill Hospital, Spring Hill | 9991100231 | | |
| Ocala Regional Medical Center, Ocala..... | 9991100239 | | |
| Orange Park Medical Center, Orange Park..... | 9991100230 | | |
| Osceola Regional Medical Center, Kissimmee | 9991100233 | | |
| Regional Medical Center Bayonet Point, Hudson..... | 9991100238 | | |
| St. Petersburg General Hospital, St. Petersburg..... | 9991100243 | | |
| Georgia | | | |
| Coliseum Medical Centers, Macon..... | 9991200238 | | |
| Redmond Regional Medical Center, Rome..... | 9991200236 | | |

Fellowships

Facility Name, City

ACGME Program Number

ADDICTION MEDICINE

Florida

Brandon Regional Hospital, Brandon 4041140002

Georgia

Redmond Regional Medical Center, Rome 4041240007

Louisiana

Tulane Medical Center, New Orleans 4042140001

Nevada

Southern Hills Hospital & Medical Center, Las Vegas 4043140001

North Carolina

Mission Hospital, Asheville 4043640003

ALLERGY & IMMUNOLOGY

Louisiana

Tulane Medical Center, New Orleans 0202131017

CARDIOVASCULAR DISEASE

California

Riverside Community Hospital, Riverside 1410514291

Florida

Aventura Hospital & Medical Center, Aventura 141114290

Brandon Regional Hospital, Brandon 141114296

JFK Medical Center, Lake Worth 141114286

Largo Medical Center, Largo 141114292

Northside Hospital, St. Petersburg 141114289

Orange Park Medical Center, Orange Park 141114293

Regional Medical Center Bayonet Point, Hudson 141114294

Louisiana

Tulane Medical Center, New Orleans 1412121130

Texas

Corpus Christi Medical Center, Corpus Christi 1414814298

Medical City Fort Worth, Fort Worth 1414814299

CHILD AND ADOLESCENT PSYCHIATRY

Louisiana

Tulane Medical Center, New Orleans 4052121045

CLINICAL CARDIAC ELECTROPHYSIOLOGY

Louisiana

Tulane Medical Center, New Orleans 1542114140

Facility Name, City

ACGME Program Number

COLON AND RECTAL SURGERY

Utah

St. Mark's Hospital, Millcreek 0604912060

CONSULTATION-LIAISON PSYCHIATRY

North Carolina

Mission Hospital, Asheville 4093640059

CRITICAL CARE ANESTHESIOLOGY

Nevada

MountainView Hospital, Las Vegas 0453104001

CYTOPATHOLOGY

Louisiana

Tulane Medical Center, New Orleans 3072121080

DERMATOPATHOLOGY

Louisiana

Tulane Medical Center, New Orleans 1002121052

ENDOCRINOLOGY, DIABETES, AND METABOLISM

Florida

Osceola Regional Medical Center, Kissimmee 143114189

Regional Medical Center Bayonet Point, Hudson 143114190

Louisiana

Tulane Medical Center, New Orleans 1432121089

Nevada

MountainView Hospital- Nevada, Las Vegas 1433114001

FORENSIC PSYCHIATRY

Louisiana

Tulane Medical Center, New Orleans 4062121010

GASTROENTEROLOGY

Florida

Aventura Hospital & Medical Center, Aventura 144114229

Largo Medical Center, Largo 144114231

Regional Medical Center Bayonet Point, Hudson 144114232

Louisiana

Tulane Medical Center, New Orleans 1442121108

Nevada

Southern Hills Hospital & Medical Center, Las Vegas 144314252

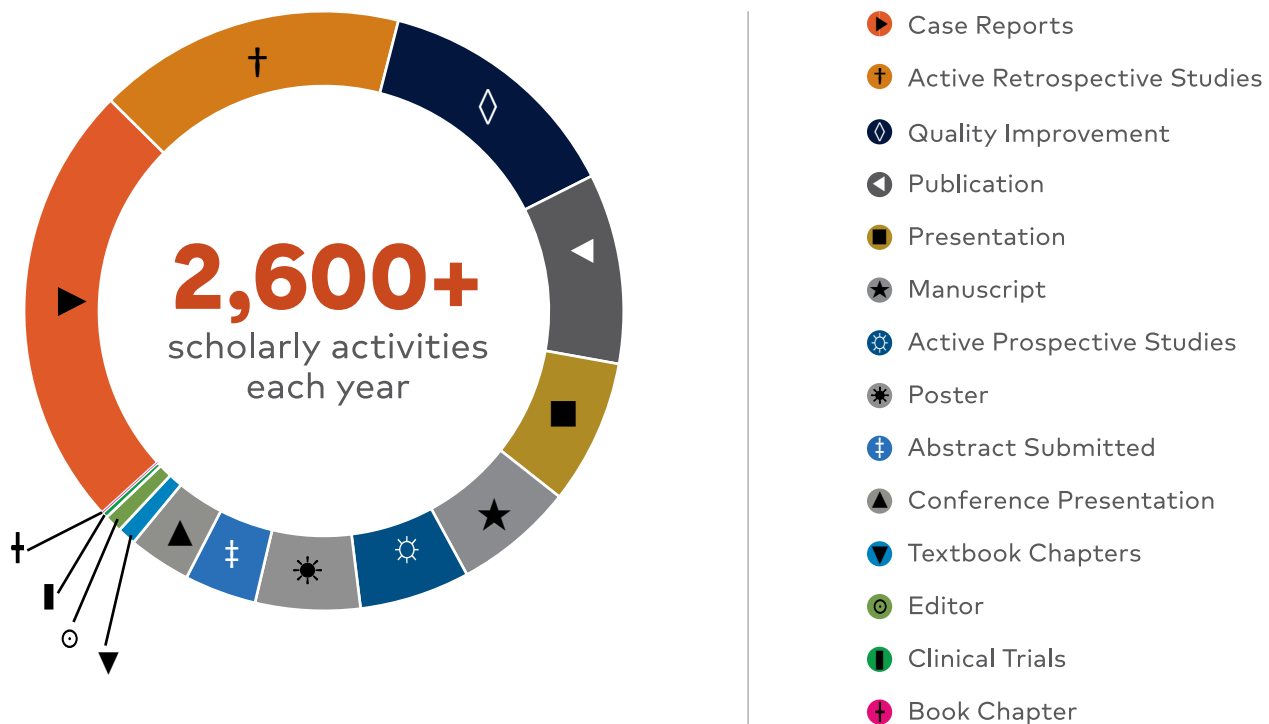
Texas

Medical City Fort Worth, Fort Worth 1444814252

| Facility Name, City | ACGME Program Number |
|--|----------------------|
| GERIATRIC MEDICINE | |
| Florida | |
| Aventura Hospital & Medical Center, Aventura | 1511114146 |
| North Florida Regional Medical Center, Gainesville | 1251112033 |
| Oak Hill Hospital, Spring Hill | 1511114148 |
| HEMATOLOGY AND MEDICAL ONCOLOGY | |
| Florida | |
| Orange Park Medical Center, Orange Park | 1551114156 |
| Louisiana | |
| Tulane Medical Center, New Orleans | 1552121023 |
| HEMATOPATHOLOGY | |
| Louisiana | |
| Tulane Medical Center, New Orleans | 3112131076 |
| HOSPICE AND PALLIATIVE MEDICINE | |
| Florida | |
| Aventura Hospital & Medical Center, Aventura | 5401112118 |
| JFK Medical Center, Lake Worth | 5401114088 |
| North Florida Regional Medical Center, Gainesville | 5401112121 |
| Orange Park Medical Center, Orange Park | 5401112120 |
| Regional Medical Center Bayonet Point, Hudson | 5401112126 |
| Louisiana | |
| Tulane Medical Center, New Orleans | 5402112001 |
| South Carolina | |
| Grand Strand Medical Center, Myrtle Beach | 5404512124 |
| INFECTIOUS DISEASE | |
| Florida | |
| Aventura Hospital & Medical Center, Aventura | 1461114212 |
| Blake Medical Center, Bradenton | 1461114214 |
| Louisiana | |
| Tulane Medical Center, New Orleans | 1462121105 |
| INFECTIOUS DISEASE (PEDS) | |
| Louisiana | |
| Tulane Medical Center, New Orleans | 3352121022 |
| INTERNAL MEDICINE (NEURO) | |
| Louisiana | |
| Tulane Medical Center, New Orleans | 7452144005 |
| INTERNAL MEDICINE (PSYCH) | |
| Louisiana | |
| Tulane Medical Center, New Orleans | 7152144010 |
| INTERVENTIONAL CARDIOLOGY | |
| Florida | |
| Largo Medical Center, Largo | 1521114151 |
| Regional Medical Center Bayonet Point, Hudson | 1521114150 |
| Louisiana | |
| Tulane Medical Center, New Orleans | 1522113143 |
| Texas | |
| Medical City Fort Worth, Fort Worth | 1524814172 |
| NEPHROLOGY | |
| Louisiana | |
| Tulane Medical Center, New Orleans | 1482121090 |
| OSTEOPATHIC NEUROMUSCULOSKELETAL MEDICINE | |
| Colorado | |
| Sky Ridge Medical Center, Lone Tree | 2750700001 |
| PEDS / PSYCH / CHILD-ADOLESCENT PSYCH | |
| Louisiana | |
| Tulane Medical Center, New Orleans | 7302144012 |

A commitment to scholarly activity

Based on more than 35 million patient encounters each year, our scholarly activity bridges the gap between compelling evidence and exceptional patient care.



Our experiential learning is rooted in evidence-based medicine that leads to innovative, **real-world patient health solutions**.

Merging the rigor of **ACGME** accreditation with high patient touch, our residents and fellows deliver evidence-based care that demonstrates our mission to care for and improve human life.

We offer **National Grand Rounds** that leverage accomplished clinical expertise from across HCA Healthcare, bringing the nation's leading medical experts to our residency and fellowship programs.

Notable Publications

- The Journal of the American Medical Association (JAMA)
- Annals of Surgical Oncology CHEST Journal
- American Journal of Respiratory & Critical Care Medicine
- American Journal of Infectious Diseases

Notable Presentations

- American College of Cardiology
- Society of Critical Care Medicine
- American College of Physicians
- Society of Hospital Medicine
- American College of Surgeons

Influential Collaboration

HCA Healthcare residents and fellows have access to talented, highly skilled teams of faculty, industry experts and dedicated research teams to guide residents and fellows through their journey. Residents and fellows produce evidence that drives future practice by leveraging HCA Healthcare's national clinical data warehouse – the heart of our data ecosystem.

HCA Healthcare Scholarly Commons is a platform to collect, share and publish the variety of academic work created by the Graduate Medical Education community. It is a collaborative, open access resource developed to discover and showcase our contributions to medical knowledge. Included on this platform is the **HCA Healthcare Journal of Medicine**, a peer-reviewed scientific periodical focused on innovation, enhanced quality and developing new knowledge in clinical care and medical education for the benefit of all patients.



About HCA Healthcare

HCA Healthcare is one of the nation's leading providers of healthcare services and is comprised of 186 hospitals and more than 2,000 sites of care including surgery centers, freestanding ERs, urgent care centers, diagnostic and imaging centers, walk-in clinics and physician clinics in 21 states and the United Kingdom. With its founding in 1968, Nashville-based HCA Healthcare created a new model for hospital care in the United States.



HCA Healthcare is one of the nation's leading providers of healthcare services and is comprised of 186 hospitals and more than 2,000 sites of care including surgery centers, freestanding ERs, urgent care centers, diagnostic and imaging centers, walk-in clinics and physician clinics in 21 states and the United Kingdom. With its founding in 1968, Nashville-based HCA Healthcare created a new model for hospital care in the United States.



Size

280,000[^]
colleagues

98,000[^]
registered nurses

46,000[^]
active and affiliated physicians



Patient Care

HCA Healthcare's U.S. hospitals provide approximately 5% of all inpatient hospital services in the country.

In 2019:

35 million[^]
patient encounters

9.2 million
emergency room visits

220,000[^]
babies delivered

View the **HCA Healthcare Community Impact Report** to learn more about our award-winning programs, technology advances, and partnerships with community organizations to fulfill our commitment to the care and improvement of human life.



Giving Back

\$4.2 billion
invested in 2019 in capital spending in the communities we serve

\$3.7 billion
estimated 2019 cost for the delivery of charity care, uninsured discounts and other uncompensated care

\$45 million
in charitable cash contributions provided across the enterprise in 2019



Industry Leader

Sarah Cannon, the Cancer Institute of HCA Healthcare, provides **state-of-the-art** cancer care close to home for hundreds of thousands of patients, a number unmatched by any single cancer center.

HCA Healthcare affiliates deliver healthcare services in **more than 170 languages and dialects.**

HCA Healthcare continues its comprehensive program of **environmental sustainability** to promote energy and water conservation, green building initiatives, increased recycling and environmentally conscious purchasing.

[^]Approximate

